

# Repair Plus CB 435 Fiber Fine

Construction Chemicals > Repair Mortars > Cement-Based



Repair Plus CB 435 Fiber Fine is a single-component, polymer-modified, fiber-reinforced surface repair, retouching, and leveling mortar with high adhesion capability and fine aggregates.

## ■ Fields of Application

- As a final layer plaster for all mortar and reinforced concrete surfaces and those treated with CB 435 Coarse
- Repairing exposed concrete
- All restoration works
- Surface repairs of concrete precast elements up to 5 mm
- Surface leveling before ceramics and paint
- Fine leveling plaster for horizontal and vertical surfaces
- Smoothing previously repaired but uneven surfaces
- Surface leveling before insulation applications

## ■ Advantages

- Single-component; ready to use by mixing with water only
- Easy to apply
- Resistant to water and frost
- High adhesion
- Does not contain toxic substances and does not create a corrosive effect on the applied surface
- Compliant with R3 Class

## 1 Surface Preparation

The surface to be applied must be clean and free of loose particles. The surface should have sufficient strength. It must be moistened before application. Do not apply to frozen surfaces.

## 2 Mortar Preparation

Pour approximately 5-6 liters of clean water into a container. Slowly mix a 25 kg bag of CB 435 Fine with a low-speed mixer until there are no lumps. Let the prepared mortar rest for 5-10 minutes and then mix again before use. The mixture should be consumed within 25-30 minutes.

## 3 Application

The prepared mortar is applied with a steel trowel or spatula. The application thickness should be 1-5 mm in a single layer. For thicker applications, wait for the first layer to dry or prefer CB 435 Coarse. Sponging can be done from the start of drying. In hot weather, keep the application surface moist.

## 4 Packaging

25 kg PE-reinforced kraft bags.

## 5 Consumption

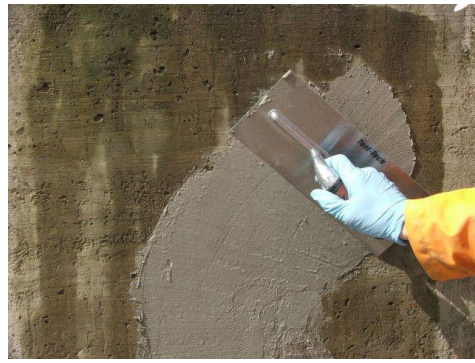
The consumption of the product is 1.60 kg/liter. (for 1 mm thickness)

## 6 Precautions

- Be precise with the amount of water to be mixed. Do not exceed the recommended amount
- Do not add any foreign materials (lime, cement, gypsum, etc.) to the prepared mortar
- You can enhance product performance by adding 50 ml of latex Ab 610 to the mortar prepared with a 25 kg bag
- Expired mortar should not be reused by mixing with water or dry mortar
- It is recommended to apply at a temperature between +5°C and +35°C
- Do not apply to frozen surfaces
- Do not apply in direct sunlight

## 7 Shelf Life

At least 12 months when protected from humidity and frost in a dry environment.



## TECHNICAL DATAS

Material Composition	Mineral fillers, polymer-reinforced additives, and cement
Appearance	Gray-colored powder
Bulk Density of Powder	~1.60 kg/l
Bulk Density When Wet	~ 1,95 kg/l
Application Temperature	(+5°C) - (+35°C)
Pot Life	30 minutes
Flexural Strength	≥ 6 N/mm <sup>2</sup> (28 days)
Compressive Strength	≥ 20 N/mm <sup>2</sup> (28 days)
Adhesion Strength	≥ 1 N/mm <sup>2</sup> (28 days)
Application Thickness	1-5 mm
Soluble Chloride Content	≤ %0.05
Service Temperature	-20°C to +80°C
Working Time	30 minutes (+20°C)
Shelf Life	12 months in unopened packaging in a dry environment
Packaging	25 kg PE-reinforced kraft bag