

# Polish / MC WB 932

Construction Chemicals > Surface Protectors and Polishes > Acrylic-Based > Water-Based

Polish/MC WB 932 is a water-based acrylic product suitable for both interior and exterior use. It provides a durable gloss without causing deep darkening of the concrete. It is resistant to oils, detergents, acids, salts, and most chemicals, and it protects concrete against cracking, peeling, mold, staining, and erosion. This transparent, glossy, multi-purpose micro concrete/concrete maintenance and protection polish is also resistant to hot tire marks, making it an excellent choice as a topcoat polish in concrete polishing applications.

## ■ Fields of Application

- For concrete floors exposed to high traffic, where high abrasion resistance is desired
- Where resistance to chemicals is required, in environments Where the service life of concrete needs to be extended
- Where high dust-proofing is needed
- As a topcoat polish in concrete polishing applications
- To preserve the appearance of decorative concrete surfaces that may yellow
- And to prevent the formation of hot tire marks
- All cement-based floors can be used.

## ■ Advantages

- It is easy to apply and is resistant to hot tire marks in parking lot uses
- It reduces stain formation and provides protection for the floor against spills of food products, household cleaning materials, and industrial solutions.
- It is resistant to scratches during work performed on the applied surface
- Being water-based and odorless, it can be used in enclosed spaces. It has no toxic or flammable properties
- It provides an excellent application for surfaces that are hardened and densified
- Since it cures quickly on the applied surface, it allows for early reopening to traffic
- It extends the service life of concrete and ensures that the applied surface is hard and glossy.

## 1 Surface Preparation and Application

All substances that prevent adhesion, such as dust, dirt, and oil, should be cleaned from the surface, and there should be no loose or moving particles. If the previous coating is not the same or a similar water-based sealer, foreign coatings should be removed. The surface should be cleaned using appropriate methods such as steam cleaning, high-pressure water jet, or scouring. Ensure the floor is dry before application. Surface and air temperatures should be above 10°C and below 30°C. Avoid applying to excessively hot surfaces, as rapid drying may cause bubbles or streaks in the coating. For applications on damp surfaces, a sample application on a small predetermined area should be done first to test adhesion performance. Depending on the absorbency of the floor, 1-2 coats can be applied. Ensure the floor is completely dry between coats. For smooth concrete, use a fine-nap microfiber or fine-nap mohair roller. The surface should be thoroughly saturated with resin, and additional coats should be applied if more gloss is desired. In concrete polishing applications, apply after the final resin pad application. Before application, the surface should be thoroughly cleaned, and the product applied with a spray should be evenly distributed with a short-nap mop without allowing it to dry, then left to dry.

## 2 Packaging

5-liter Tin Can 15-liter Tin Can

## 3 Sarfiyat

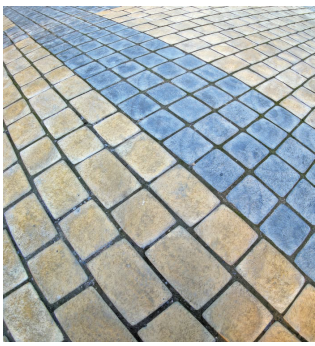
70-150 g/m<sup>2</sup> (Depending on surface condition)

## 4 Precautions

- Protective goggles, gloves, mask, and clothing should be worn before application
- Avoid contact with skin and eyes; in case of contact, wash thoroughly with plenty of water and consult a doctor
- It is suitable for indoor use
- The product does not require a special application process
- It should not be applied to wet or frozen surfaces. Empty containers should not be used for storing food or drinking water

## 5 Storage Conditions and Shelf Life

- It has a shelf life of 1 year in unopened packaging
- The product should be stored away from direct sunlight and at temperatures between 5-35°C
- It should be protected from direct sunlight.
- After use, the container should be tightly closed. The product should not be mixed with other chemicals.



## TECHNICAL DATAS

Resin Type	Acrylic
Color	White liquid, clear and glossy when dry
Solvent	Water
Odor	Odorless
Finish	Glossy (can be matte with C&P Matting)
Density	1.05 kg/L
UV Resistance	Poor – Indoor
pH	7.5 – 8.0
Adhesion to Concrete	> 2 MPa
Recoating Time	4 hours (at 24°C room temperature)
Full Cure Time	36 hours (at 24°C room temperature)
Active Ingredient	0.35
Solid Content	0.35
Flash Point	N/A
Freezing Point	+5°C

### **S** Safety and Health Warnings

- Protective goggles, clothing and gloves should be worn. Avoid contact with skin, eyes and clothing. In case of contact, wash with plenty of water and seek medical advice immediately. Prevent the product from spreading into the environment
- Do not eat or drink during use, do not smoke
- All packaging and containers should be carefully packed to minimize spills
- Containers should be kept tightly sealed when not in use
- Keep away from heat, sparks, flames, hot surfaces
- Broken packages should not be transported without protective equipment.
- Empty containers must not be reused
- The product must be stored in descriptively labeled containers
- Keep out of the reach of children. Keep away from food, drinks and animal feed
- Keep away from oxidizing agents, heat and flames
- Should only be stored in the original container
- Containers should be kept tightly closed and upright in a cool and well-ventilated place