

Water-swelling tape made from thermoplastic elastomer (TPE) with a 500% expansion capacity for waterproofing cold joints.

■ Fields of Application

- For waterproofing structural joints
- In tunnels, subways, sewers, and water treatment plants
- In water reservoirs and pools
- At the junctions of foundation and retaining walls (cold joints)

■ Advantages

- Easy to apply
- Expands quickly
- Self-expands upon contact with water, filling cracks and voids
- Maintains dimensional stability even at high temperatures
- No disintegration or fragmentation during swelling
- Works effectively with groundwater, tap water, freshwater, saltwater, and alkaline water (cementitious water)

1 Preparation of Substrate

On very rough surfaces, necessary corrections should be made with repair mortars before application. The substrate must be durable and clean for the application. There should be no water puddles on the surface.

2 Application

The application should be done at least 5 cm from the edge of the concrete area that will be exposed to water. The application should be performed using Repoc EB 456. At the joint where two bands meet, they should be overlapped by 50 mm. After application, the product should be protected from water contact until fresh concrete is poured to prevent premature expansion.

3 Consumption Amount

1 mt/mt

4 Points to Consider

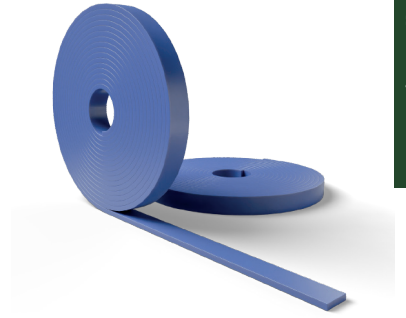
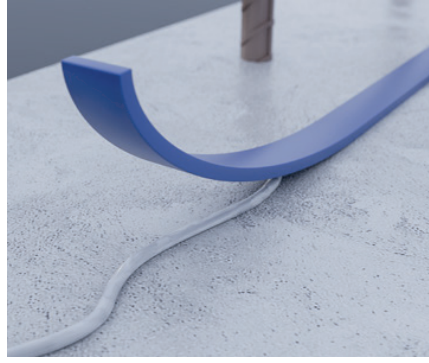
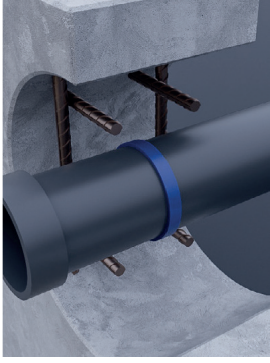
- Merkswell should be placed in the middle of the formwork and secured to prevent movement during concrete pouring.
- Nailing is not recommended for securing the tape; it should be fixed with special epoxy or polyurethane adhesive.
- Ensure that there is a minimum of 5 cm of concrete layer thickness on both sides of the tape.

5 Packaging

20 and 10 m rolls

6 Storage Life

Maximum 24 months - The product should be stored in its original package in a dry environment away from water and moisture.



TECHNICAL DATAS

Dimensions	5x20 mm - 10x20 mm
Expansion Rate	>9500
Elongation at Break	495% / 790%
Tensile Strength	1.15 / 2.15 MPa
Color	Blue, Red
Density	1,27 g/cm ³
Hardness	40
Application Temperature	-30°C / 70°
Swelling rate in water containing 3% sea salt	100 %

Note: Does not contain bentonite. Calculated at 23°C.