

# Pu Acrylic Polish Wb 938

Construction Chemicals > Surface Protectors and Polishes > Water Based Acrylic Polyurethane



Pu Acrylic Polish Wb 938 is a water-based, acrylic polyurethane-based, two-component concrete protection and finishing material suitable for indoor use. It has high chemical and water resistance, excellent abrasion resistance, and a high stain resistance capacity. Due to its superior strength characteristics, it is used in industrial floors subjected to heavy traffic loads.

## ■ Fields of Application

- In industrial buildings, hospitals, and interior warehouse spaces
- On microconcrete exposed to heavy pedestrian traffic, and in industrial areas subjected to forklift loads.
- Suitable for use in concrete coloring and acid stain applications, and in all areas where dust resistance and abrasion resistance are desired

## ■ Advantages

- It is a two-component product. It does not yellow
- It has very high adhesion and abrasion resistance.
- It is resistant to chemicals. It is easy to apply. It prevents dusting on concrete. It is non-flammable

## 1 Surface Preparation and Application

The surface must be clean, dry, and completely free from loose particles, grease, oil, or any substances that could prevent proper adhesion. When applied directly to concrete, it can be used as a sealer or dust-proof coating once the concrete has fully set. The surface should be free of concrete salts and dry. Ensure there are no residues, dust, or dirt before application. Pu Acrylic Polish Wb 938 should be mixed in a container with a low-speed drill before application. For applications on damp surfaces, first perform an adhesion performance test on a small designated area. Depending on the absorbency of the floor, 1-2 coats can be applied. Ensure the floor is completely dry between coats. Use a fine-nap microfiber or fine-nap mohair roller for smooth concrete. The surface should be thoroughly saturated with resin, and additional coats can be applied if more gloss is needed.

## 2 Consumption

200-300 g/m<sup>2</sup> (depending on the surface condition)

## 3 Storage Conditions and Shelf Life

- The product has a shelf life of 6 months in unopened packaging
- It should be stored away from direct sunlight and at a temperature between 5-35°C
- Protect the product from direct sunlight
- Ensure the container is tightly sealed after use
- Do not mix the product with other chemicals

## 4 Packaging

20 kg Set (16.9 kg+3.10 kg in Plastic Can)

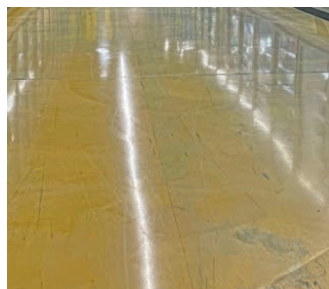
10 kg Set (8.45 kg+1.55 kg in Plastic Can)

## 5 Precautions

Protective goggles, gloves, masks, and clothing should be used before application. Contact with skin and eyes should be avoided; in case of contact, wash thoroughly with water and seek medical attention. The product is suitable for both indoor and outdoor use. It does not require any special application procedures. Do not apply on wet or frozen surfaces. Empty containers should not be used for storing food or drinking water.

## 6 Safety and Health Warnings

Wear protective goggles, clothing, and gloves. Avoid contact with skin, eyes, and clothing. Prevent environmental dispersion of the product. Do not eat, drink, or smoke while using the product. Minimize spills by carefully packaging all containers and packaging. Store containers tightly sealed when not in use. Keep away from heat, sparks, flames, and hot surfaces. Do not handle broken packages without protective equipment. Do not reuse empty containers. Immediately remove and wash contaminated clothing before reuse. Store the product in clearly labeled containers. Keep out of reach of children. Keep away from food, drink, and animal feed. Keep away from oxidizing agents, heat, and flames. Store only in its original container. Keep containers tightly closed, upright, in a cool, well-ventilated area, and protected from damage.



## TECHNICAL DATAS

Resin Type	Acrylic-Polyurethane
Color	White liquid, dries clear
Solvent	Water-based
Odor	Odorless
Finish	Glossy (can be made matte)
Density	1,05 kg/lt
UV Direnci	Indoor-Outdoor
Ph	7,5 – 8,0
Adhesion to Concrete	> 2 MPa
Re-coating Time	4 hours (at 24°C room temperature)
Full Drying Time	36 hours (at 24°C room temperature)
Active Ingredient	> %50
Solid Content	> %50
Flash Point	N/A
Freezing Point	+5 °C

### **7 Important**

Avoid direct contact with skin. If contact occurs, rinse with clean water. Avoid contact with eyes. In case of eye contact, rinse thoroughly with clean water for 15 minutes. If ingested, drink plenty of water and seek medical attention immediately.

### **8 Note**

The information provided in this product data sheet is given in good faith based on current knowledge and experience. If you are not satisfied after conducting a surface test in a small area, please contact our technical service department immediately. This information pertains solely to the specified material and may not be applicable to combinations with other materials or for other processes. The information is accurate to the best of the company's knowledge as of the specified date. Since usage conditions are beyond our control, all recommendations are made without any guarantee or warranty regarding accuracy, reliability, or completeness. It is the user's responsibility to determine the suitability and application of this information for their own use. The manufacturer's responsibility is limited to the replacement of products proven to be defective.