

Repair Plus CB 435 Fine

Construction Chemicals > Repair Mortars > Cement-Based



Repair Plus CB 435 Fine is a single-component, polymer-modified, high-adhesion, fine aggregate surface repair, retouch, and leveling mortar.

■ Fields of Application

- As a final coat plaster on all mortar and reinforced concrete surfaces and CB 435 Coarse applied surfaces
- Repair of exposed concrete
- All restoration works
- Surface repairs of up to 5 mm on concrete prefabricated elements
- Surface leveling before ceramic and painting
- Fine leveling plaster on horizontal and vertical surfaces
- Smoothing previously repaired but uneven surfaces
- Surface leveling before insulation applications

■ Advantages

- Single-component
- Prepared by mixing only with water
- Easy to apply
- Resistant to water and frost
- High adhesion
- Does not contain toxic substances; does not cause corrosive effects on the applied surface
- Complies with R2 class

1 Surface Preparation

The surface to be applied must be clean and free of loose particles. The surface must have sufficient strength. The surface should be moistened before application. Do not apply on frozen surfaces.

2 Mortar Preparation

Approximately 5-6 liters of water is placed in a clean container. Add 25 kg of CB 435 Fine and mix with a low-speed mixer to avoid lumps. Let the prepared mortar rest for 5-10 minutes, then mix again before use. The mixture should be used within 25-30 minutes.

3 Application

The prepared mortar is applied with a steel trowel or spatula. The application thickness should be between 1-5 mm in a single coat. For thicker applications, allow the first coat to dry or use CB 435 Coarse. Sponge finishing can be done as the application starts to dry. In high temperatures, moisten the application surface.

4 Packaging

25 kg PE-reinforced kraft bags.

5 Consumption

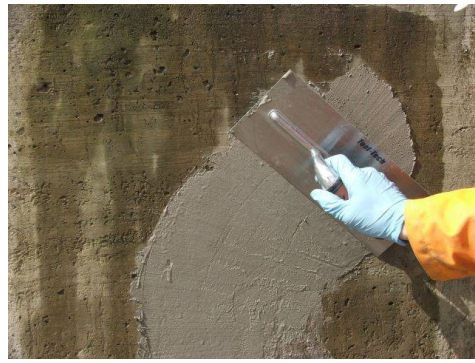
The product consumption is 1.60 kg/l (for 1 mm thickness).

6 Precautions

- Be precise with the amount of water mixed; do not exceed the recommended amount
- Do not add any foreign materials (lime, cement, plaster, etc.) to the prepared mortar
- 50 ml of latex Ab 610 can be added to the mortar prepared with a 25 kg bag to enhance product performance
- Mortar that has exceeded its usage time should not be mixed with water or dry mortar and reused
- Application is recommended between +5°C and +35°C
- Do not apply on frozen surfaces
- Avoid direct sunlight during application

7 Shelf Life

At least 12 months in a dry environment and protected from frost.



TECHNICAL DATAS

| | |
|-------------------------|---|
| Composition | Mineral fillers, polymer-reinforced additives, and cement |
| Appearance | Gray powder |
| Bulk Density of Powder | ~1.60 kg/l |
| Bulk Density When Wet | ~ 1,90 kg/l |
| Application Temperature | (+5°C) - (+35°C) |
| Pot Life | 30 minutes |
| Flexural Strength | ≥ 5 N/mm ² (28 days) |
| Compressive Strength | ≥ 15 N/mm ² (28 days) |
| Adhesion Strength | ≥ 0.8 N/mm ² (28 days) |
| Application Thickness | 1-5 mm |
| Service Temperature | -20°C to +80°C |
| Working Time | 30 minutes (+20°C) |
| Shelf Life | 12 months in unopened packaging in a dry environment |
| Packaging | 25 kg PE-reinforced kraft bag |